



WIDE SPAN SHELVING

General Features of Wide Span

Wide Span shelving is designed for the hand-loading of medium to heavy loads and is ideal for storing small quantities of a very large variety of product types.

The system is accessed on foot, either at floor level, or on elevated walkways fitted between the racks.

Our unique post design eliminates down aisle growth as well as wasted space behind the post.



Advantages of the System

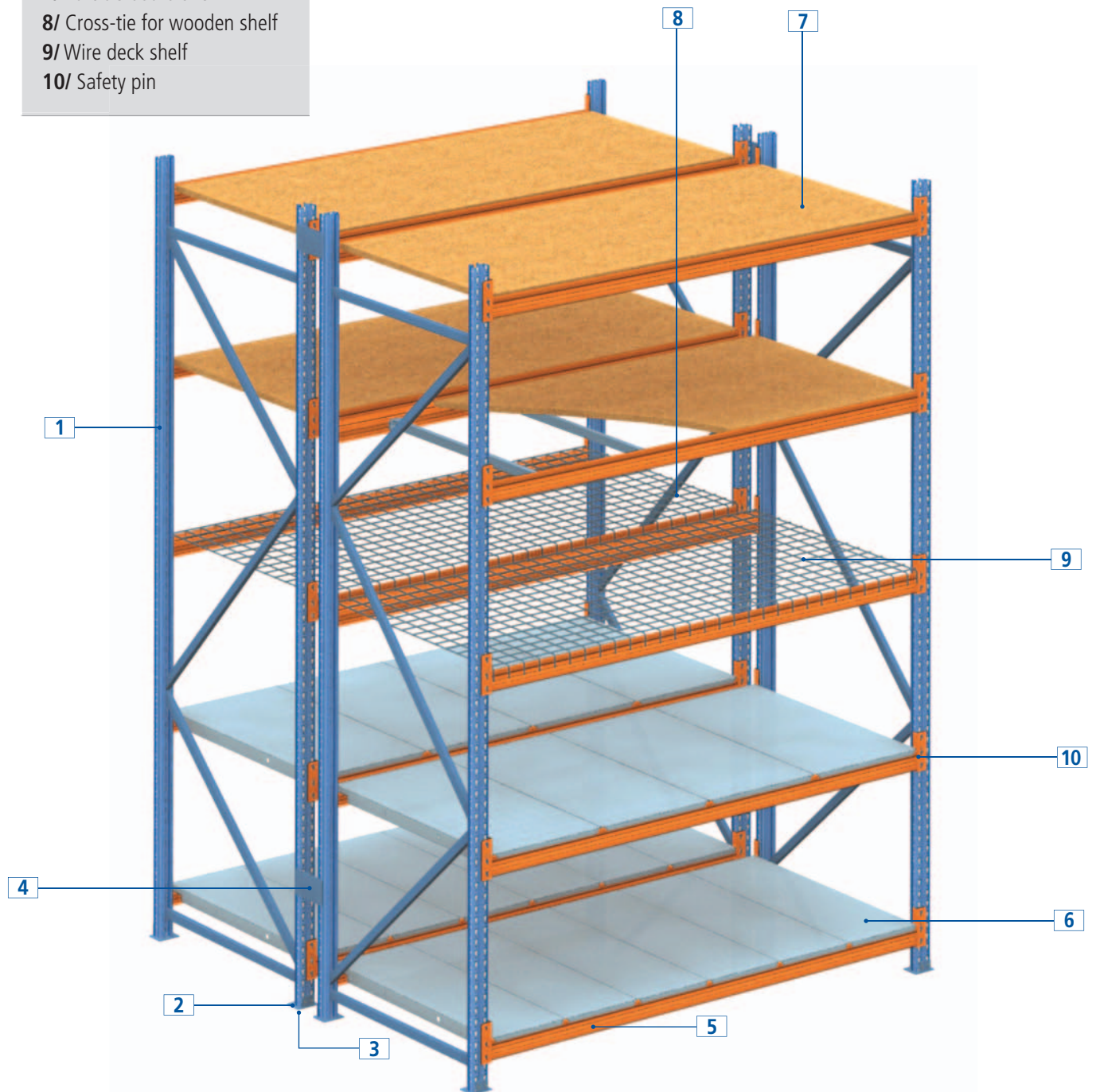
The most important benefits of the Wide Span system are:

- Possibility of **storing medium to heavy loads**
- **Having the flexibility** to install one or several aisles above ground to gain access to upper levels
- **Easy assembly**
- **Excellent mobility**
- A **wide range of components** adaptable to your needs

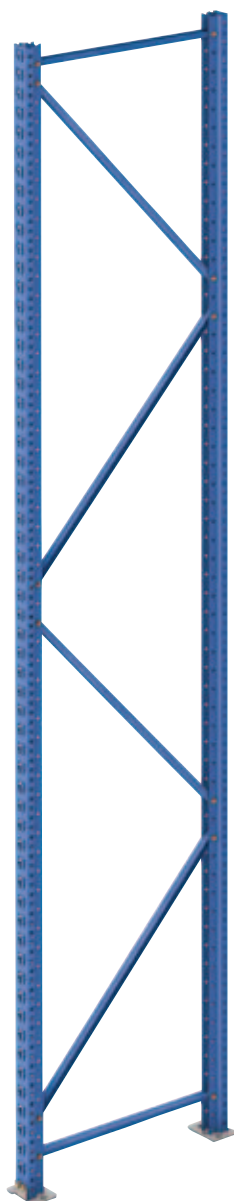


Basic Components

- 1/ Frame
- 2/ Footplate
- 3/ Shim
- 4/ Row spacer
- 5/ Z-beam
- 6/ Galvanized shelf
- 7/ Particle board shelf
- 8/ Cross-tie for wooden shelf
- 9/ Wire deck shelf
- 10/ Safety pin



Frames



Frames are formed by two uprights with the corresponding bracings, footplates and accessories.

Different depth measurements enable the racking to be adaptable to sizes of the products to be stored.

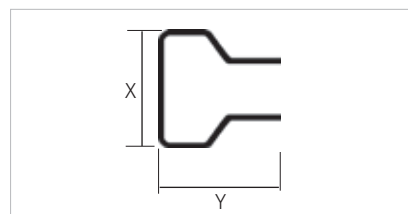
The diversity of models, sections and thicknesses of uprights makes it possible to adapt to the most varied of loads.



Frame footplates

The frames are fixed to the floor with footplates placed at the base of the uprights. Different footplates are available for the upright model. Anchor bolts can be fitted when the rack requires this.

U7515 Posts



X	Y	GA
1-15/16"	2-1/32"	16

Wide Span Shelving Load Capacity

PROFILE TYPE	VERTICAL SPACING (in inches)									
U7515 POSTS	10"	20"	30"	40"	50"	60"	70"	80"	90"	100"
Max. load per frame (in lbs)	9,570	8,952	8,489	7,938	7,144	6,174	5,072	4,234	3,440	2,911

Uniformly distributed load table (in lbs) per pair of beams for deflection L/200.

PROFILE	LENGTH OF BEAMS (in inches)								
U7515 POSTS	48"	54"	60"	72"	78"	84"	90"	92"	96"
ZS-U-U-U35	1,213	1,058	970	-	-	-	-	-	-
ZS-U-U55	-	-	-	1,764	1,654	1,566	1,455	1,389	1,213
ZS-U-U65	-	-	-	1,985	1,808	1,742	1,654	1,566	1,433
MS-U65	3,021	2,690	2,403	2,007	1,874	1,720	1,588	1,477	1,411

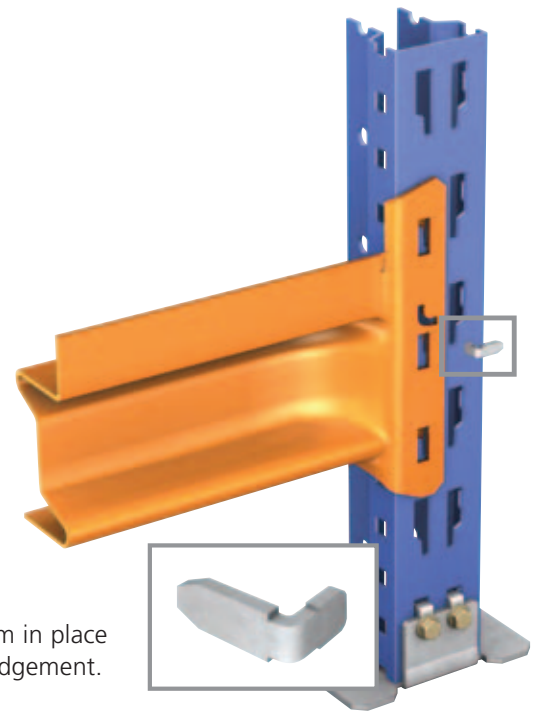
Beams

The beams are the horizontal components on which the load is directly deposited or on which the shelves are fitted in order to store small-sized products.

Connectors fit into the upright slots and adjoin them to the beam. The hooks on these connectors—a connection system developed and patented

by the Mecalux Group—are fitted into the main body at both ends, thereby increasing the load capacity. Each beam includes two safety pins.

Interlake Mecalux has an extensive range of beams to cover any storage need, in terms of size, load type and capacity.



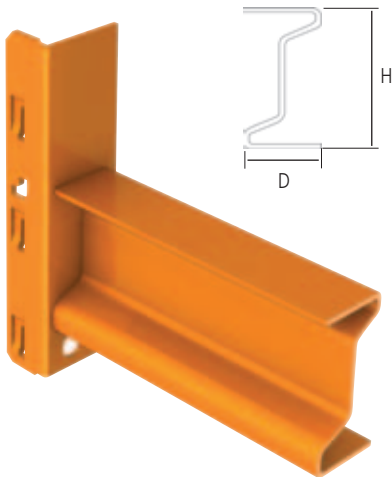
Safety pin

This secures the beam in place eliminating any dislodgement.

Each level is formed by two beams, one fitted at the front of the rack and one at the back.

MS-U65 Beams

These beams are considered inner beams which are used in the fitting of wooden shelving on back to back rows. Or they can be used with wire decks. They come in sizes of 48", 60", 72", 84" and 96."

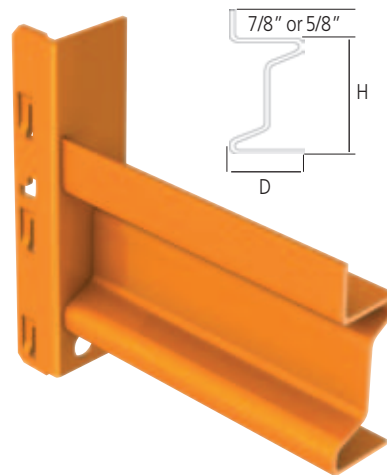


H	D	GA
2-9/16"	1-3/16"	14

MS-U65 Beams are used with wire decks

ZS-U Beams

These beams are fitted in all other situations. They come in the same sizes as the MS-U's, but there are different models: 35, 55 or 65, depending on the profiles and the thickness of the material employed. The model is defined by the load capacity required.



H	D	GA
Depends on beam model*	1-3/16"	14

*ZS-U-U35: 1-3/8", ZS-U-U55: 2-5/32", ZS-U-U65: 2-9/16"

ZS-U Beams are used with either particle board or metal shelves

Shelf Options

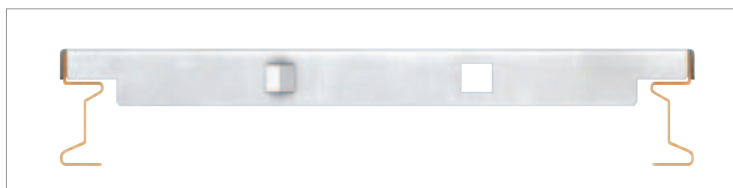
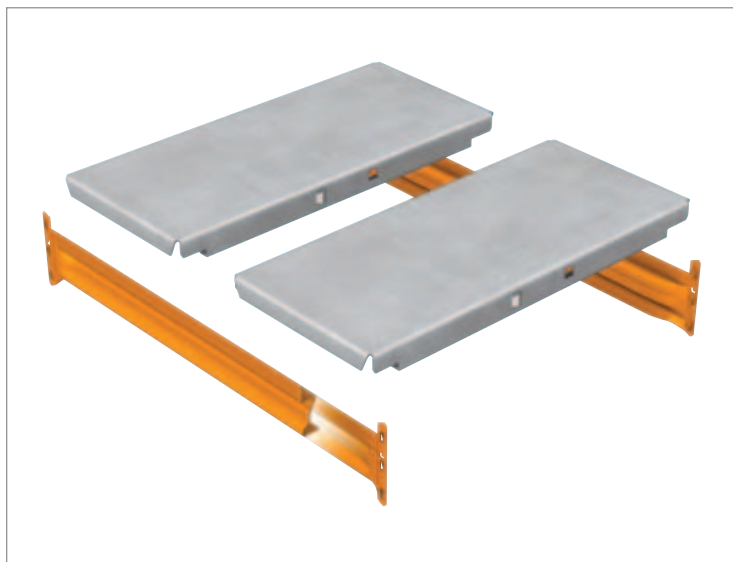
Metal Shelves

The most commonly used combination is to fit metal shelves with Z beams.

A level is made up of several shelves of widths varying in function of the length of the level and the weight of the product to be stored.

The shelves are supported on the beams, with the vertical edge also being engaged, which enables both beams of a single level to be joined. All of this gives the racking greater rigidity.

The different shelves which make up a level slot perfectly into each other thanks to the indentations and side slots.



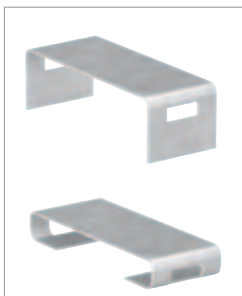
Wire Deck Shelves

They are formed by rectangular electro-welded mesh pieces supported on the MS-U65 beams and on the wire deck supports.

The shelves are clipped to the vertical edges of each beam, joining two beams of the same level together, and thus giving the unit greater rigidity.

The number of supports necessary for fitting varies according to the load to be stored.

The mesh is fitted to the supports using mesh shelf clips.



Mesh shelf clips

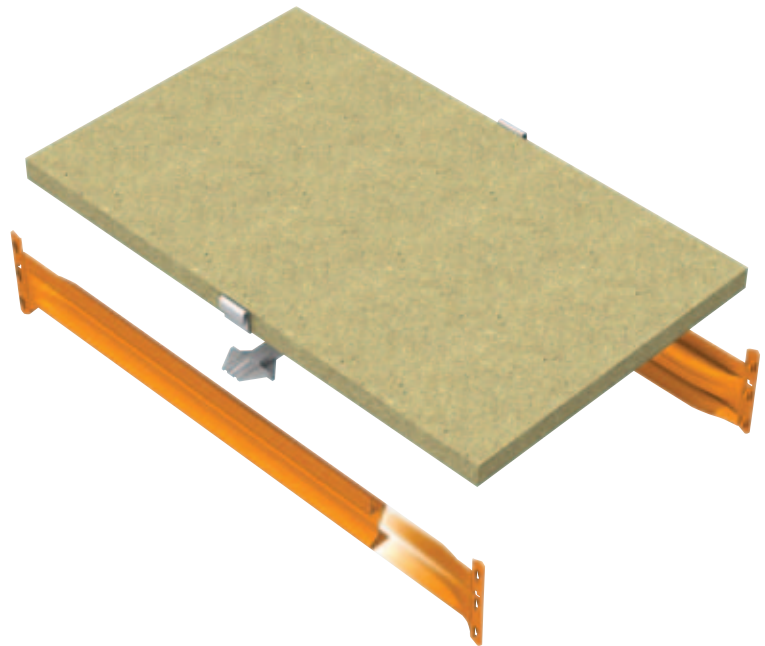


Mesh shelf supports

Particle board Shelves

They are fitted between the two ZS-U-U beams, and their front edge is concealed by the vertical edge of the beams.

Particle board supports can also be fitted if the load requires this.



The particle board shelves are also available in a white melamine finish.





e-mail: info@interlakemecalux.com | www.interlakemecalux.com | 1.877.632.2589

Sales Offices

Chicago
1600 N. 25th Ave.
Melrose Park, IL 60160
708-344-9999

Dallas
1520 Selene Drive
Carrollton, TX 75006

San Diego
8607 Ave de la Fuente
San Diego, CA 92154

Production Plants

Chicago
1600 N. 25th Ave.
Melrose Park, IL 60160

Matamoros
Las Rusias 2700,
Industrial del Norte
CP 87470 Matamoros,
Tamps, Mexico

Tijuana
Blvd. Bellas Artes #9001
Ciudad Industrial
Tijuana, Baja California,
MX 22500

Pontiac
701 Interlake Drive
Pontiac, IL 61764

Sumter
1925 Corporate Way
Sumter, SC 29154

Offices Worldwide

Argentina, Belgium, Brazil, Canada, Chile, Czech Republic, France, Germany, Italy, Mexico, Panama, Peru,
Poland, Portugal, Spain, Turkey, United Kingdom, USA, Uruguay



The contents in this document refer exclusively to Interlake Mecalux products and are for informational and promotional purposes only. The information contained herein does not form the basis for warranty or guarantee. Interlake Mecalux reserves the right to modify without prior notice the data, figures, products and finishes in the catalog.