

NATIONAL PARTITIONS

BUILD FOR CHANGE™



National Partitions® modular walls and building systems: Build for Change.™

You achieve a competitive advantage when you Build for Change

In today's business world, change happens constantly. The ability to adapt and meet the challenge of change is an essential competitive advantage. Your office space, manufacturing plant, research laboratory, or warehouse must be able to repurpose itself quickly, affordably and effectively. Conventional construction is just not designed to do this.

Modular wall and building systems that embrace change

National Partitions modular wall and building system solutions incorporate innovative construction that allows for quick and easy installation, easy removal and reconfiguration, and the ability to use over and over. It's the ultimate in flexibility, with absolutely no sacrifice in quality. Our solutions include interior walls, doors, stairs, windows and all the electrical wiring to make them fully functional.

The perfect solution to all your interior wall and office needs

National Partitions offers a wide range of wall types. Aesthetically pleasing, we can provide vinyl walls for your front office or complex of offices, LEED Walls for back offices, or rugged steel faced walls for factory floors and clean rooms. We even have walls for two-story offices.

Table of Contents:

Overview	2-3
What it Means to You	4-5
Industrial Solutions	6-9
Institutional Solutions	10-13
Commercial Solutions	14-17
Custom Solutions	18-21
Cost Comparisons	22-23
Why National Partitions?	24-27





What it means to you:

Costs 33% less

From initial cost savings to long lasting maintenance-free finishes, our wall systems are a cost-effective solution—one-third less than conventional building systems. And you benefit from tax savings by qualifying for faster depreciation than site-built walls.

Installs 75% faster

Fully fabricated wall panels and modular systems mean construction times are a fraction of conventional methods, with substantially reduced mess and plant disruptions. Most units are assembled in one day.

Highest quality products delivered on schedule

National Partitions utilizes modern, automated, high volume, continuous flow, production equipment assuring a consistent product of the highest quality. This system ensures on-schedule delivery anywhere in the world. We build our wall systems tough to last.

Fast planning and design service

Our Computer Aided Drafting Systems provide quick, accurate, engineered drawings for every project. Stored design data allows revision and regeneration in a matter of minutes—shortening lead-time and eliminating errors.

The National Advantage

National Partitions offers design, engineering, manufacturing and installation services. A single-source provider, National Partitions can provide everything you need, from concept to completion. You can depend on us to deliver modular solutions and services unmatched in the industry.





INDUSTRIAL SOLUTIONS

National Partitions is the leader in industrial applications, with many configurable solutions designed to give you maximum control over the use and layout of your plant space.

THE NATIONAL ADVANTAGES

- Greater durability and sound reduction
- Superior fire protection
- Fewer facility interruptions
- More flexibility—for fast and easy size and shape changes
- Completely moveable, all parts reusable

Modular In-Plant Rooms for any Application

For Personnel

- Offices
- Break rooms
- Conference and meeting rooms
- Team rooms
- Lunchrooms and cafeterias
- Shipping and receiving rooms
- First-aid rooms

For Manufacturing and Equipment

- Application rooms
- Laser rooms
- Equipment enclosures
- Environmental rooms
- Maintenance rooms
- Storage and security rooms
- Clean rooms
- Mezzanines
- Elevated offices





Maximizes the use of expensive floor space and dead air space. Installs quickly. Reconfigures easily. Built to Last.

CASE STUDY: AUTOMOTIVE GIANTS BUILD FOR CHANGE

With an eye on flexibility and efficiency, a leading automotive manufacturer sought an immediate and durable solution to reduce plant noise and expand office space, without hampering day-to-day operations. National Partitions manufactured more than 1,000 linear feet of our HiWalls™ for the plant, and PremierWalls™



for the offices, and installed them in just six days. Another global automotive facility required a flexible solution to separate production facilities from the public tour areas of its plant.

Again, National Partitions responded, using RapidWall™ systems to create a series of functional and easy-to-maintain window partitions, as well as 30 versatile modular training rooms.



THE BENEFITS ADD UP

- Better sound deadening than conventional rooms to create a comfortable work area, even in the loudest manufacturing plants.
- Stronger construction, suited for an industrial environment.
- Divide plant areas quickly and economically with HiWalls, up to 40 feet in a single-panel design.
- Double your space with two-story structures, while cutting floor cost in half.



INSTITUTIONAL SOLUTIONS

Educational centers, governmental facilities, and health care organizations of all types can take advantage of the flexibility and cost effectiveness of National Partitions' building solutions. We provide an economical alternative to traditional construction, and improve overall quality and efficiency in environmental and clean rooms.

THE NATIONAL ADVANTAGES

- Clean, no mess or contamination during installation
- Meet all building code requirements
- Effective space utilization
- Quiet, comfortable environments
- Designed to specific environmental requirements

Environmental/Clean Rooms

- Laboratories
- Modular research facilities
- Testing centers
- Electronic assembly

Modular Office Rooms

- Administrative offices
- Break rooms
- Classrooms
- Computer rooms
- Conference and meeting rooms
- Maintenance offices
- Partitions
- Lunchrooms and cafeterias
- Guard buildings





An affordable and practical solution to increasing the usable area of any floor space.

CASE STUDY: EDUCATION & GOVERNMENT BUILD FOR CHANGE

With just 90 days to begin critical research, a major university's research center sought a cost-effective and efficient clean-room environment. National Partitions helped build and install a clean room in about one-half the time and cost of traditional construction.

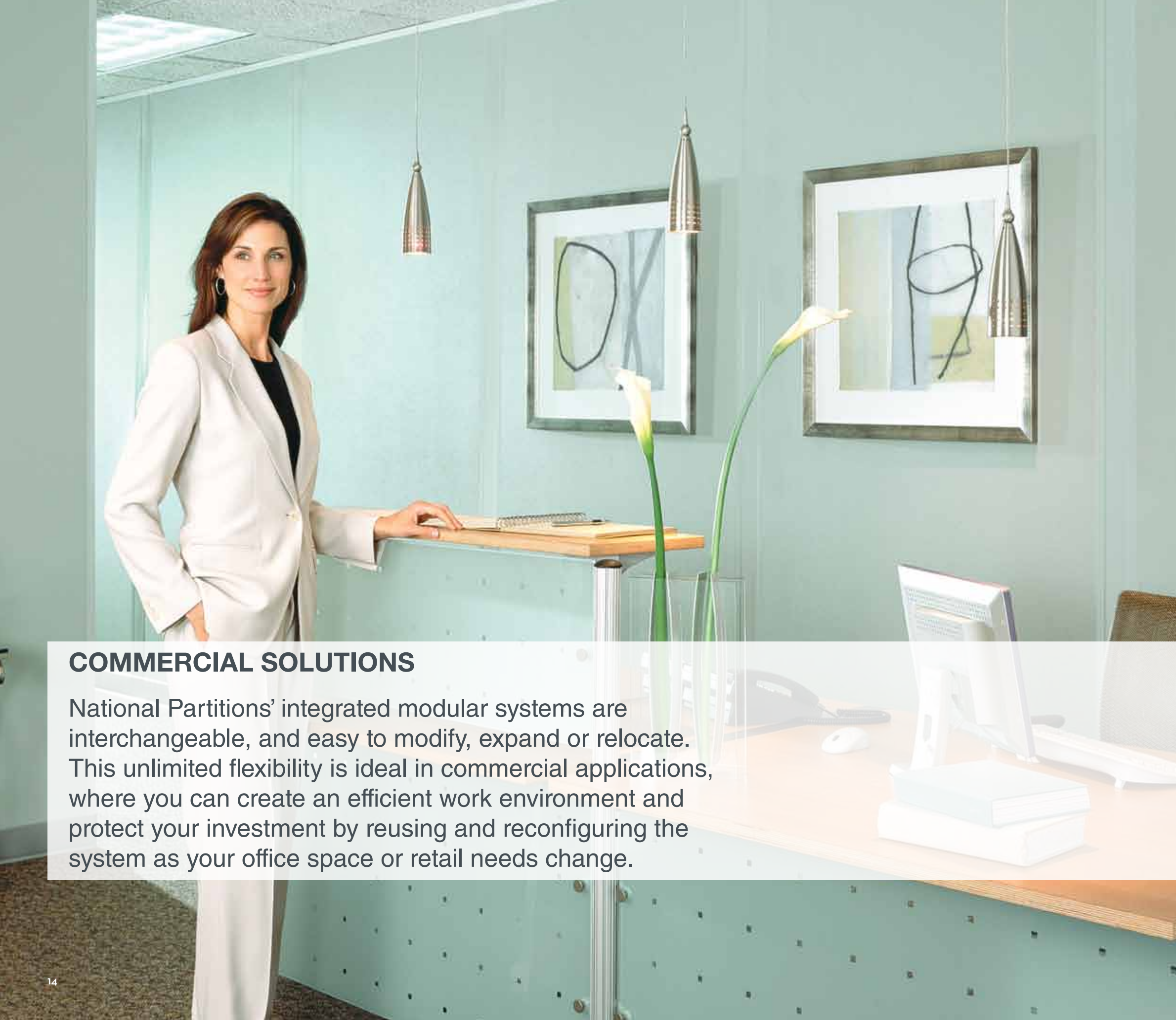


Facing tighter budgets and the need for immediate flexibility, all four branches of the U.S. military have turned consistently to National Partitions to help convert existing space into adaptable, usable facilities.

Covering a tremendously wide variety of applications and requirements, National Partitions has helped the U.S. government build for change since 1967.

+ THE BENEFITS ADD UP

- Relocate and reuse the modular room.
- Redesign to adapt to new requirements.
- Always costs less than conventional construction.



COMMERCIAL SOLUTIONS

National Partitions' integrated modular systems are interchangeable, and easy to modify, expand or relocate. This unlimited flexibility is ideal in commercial applications, where you can create an efficient work environment and protect your investment by reusing and reconfiguring the system as your office space or retail needs change.

THE NATIONAL ADVANTAGES

- Attractive, prefabricated floor-to-ceiling modular wall systems
- Many custom designer colors to choose from
- Less expensive than conventional construction
- Seven-year depreciation
- TrueMatch™ technology offers a conventional monolithic appearance

Office Partitions, Rooms & Retail Space

- Offices
- Reception areas
- Conference and meeting rooms
- Copy centers and mail rooms
- Shipping and receiving rooms
- Lunchrooms and cafeterias
- Break rooms
- Dark rooms
- Training rooms
- Storage rooms





The TrueMatch™ modular design is ideal for business centers.

CASE STUDY: FORTUNE 500s BUILD FOR CHANGE

When a large insurance agency needed to move into a new office space quickly, they turned to National Partitions to manufacture and install a series of interior offices. The installation took only one day to be fully functional with ready-to-use offices.

Because manufacturing is a dynamic and ever-changing business, modular construction became a real asset for one major national supplier. National Partitions built a modular, two-story, 3,000 square-foot building, complete with offices and locker rooms. When they relocated their facility, this modular building was disassembled, transported and reassembled within days, using 100% of the product's original components.



National Partitions continues to serve as “modular architects,” with expertise in structural and layout design, helping customers save time, money and space, while constantly Building for Change.



THE BENEFITS ADD UP

- Fewer disruptions, which can cause expensive loss of productivity.
- Faster occupancy, so you can get back to business.
- Increased privacy with floor-to-ceiling walls creates a quiet environment to improve productivity.
- Three standard colors, optional colors available.



CUSTOM SOLUTIONS

Whatever your project's size or scope, National Partitions' modular building systems include endless customized applications to solve your space problems quickly and for much less than conventional construction methods.

THE NATIONAL ADVANTAGES

CLEANWALLS™

Minimizes contamination

Totally non-progressive building system

Adaptable, interchangeable components

Easy to modify to fit existing conditions

Single-source provider

Consistent quality

Built to meet exact requirements

Certified one-hour and two-hour fire-rated wall panels

Modular Office Rooms

- Prefabricated enclosures
- Mezzanine platforms and towers
- Clean rooms
- CMM rooms
- Laser rooms
- Powder coat rooms
- Walk-in coolers and freezers
- Food processing rooms





National Partitions has been recognized for customized prefabricated designs in many leading research hospitals and manufacturing facilities.

CASE STUDY: CUSTOM SOLUTIONS BUILD FOR CHANGE

Facing a lack of quality in the finish from its powder coat suppliers, a leading furniture manufacturer decided to build their own customized environmental room. National Partitions was called in to help design, manufacture, and install a custom powder-coat room within the customer's existing facility—enabling them to gain a competitive advantage over its competitors.



Similarly, a leading manufacturer in the medical field required a way to move its multi-ton machinery in and out of its clean room production facility for maintenance and upgrades.

National Partitions manufactured and installed an innovative removable wall solution, enabling just two people to remove and replace the wall segment in a matter of minutes.



THE BENEFITS ADD UP

- The non-progressive post design provides the ability to move or replace individual panels without disturbing adjacent panels, including doors and windows.
- Fully insulated walls offer energy efficiency and impact resistance for long, useful life. In addition, the availability of steel facings adds even more strength.
- Acoustically designed to outperform any typical conventional construction.

The Benefits of National Partitions Modular Wall Systems vs. Conventional Construction

National Partitions

Easier and Faster

Construction is faster and easier and less skilled trades are needed

Our components are preassembled in our manufacturing facility and designed for fast assembly

Complete pre-wired modular electrical system allows for faster installation

Affordable

Extremely low initial expenditure

Depreciation in seven years or less

Changes, and reconfigurations are quick and easy

Flexible

All walls, windows, doors and wiring can be easily reconfigured

All products are reusable

No messy clean-up

Minor disruption of business while changes are implemented

Conventional Construction

Many trades required, lengthy construction time

Delays in one phase of construction may cause delays in subsequent phases

On-site electrical wiring is an expensive and lengthy process

Comparable initial cost

Depreciation over 39 years

Changes are expensive, messy and take time

Any changes repeat the entire construction process

New materials required

Inconvenience of material, debris clean-up, landfill and dump issues

Business is interrupted during reconfiguration

The actual price of drywall and conventional construction

When you compare the actual cost of traditional drywall to our modular wall systems, you will find the cost comparison very favorable. Traditional drywall includes significant amounts of material and labor.

Although the cost of conventional construction varies in different areas of the country, the following are some averages of conventional construction versus our modular wall systems.

COST COMPARISONS

Conventional Construction

Materials with Labor	Cost/linear ft.
Studs and gypsum board	\$ 20
Painting	15
Tape, mud, joint compound	10
Vinyl base finish	3
Materials/labor total	\$ 48

Standard Components

Electrical, telephone and data	\$ 8
Windows and door glass	30
Doors and frames	20
Labor/standard components total	\$106

Additional Features

Insulation	\$ 5
Floor to ceiling glass	40
Lighting and wiring	15
Up charge: vinyl wall covering	\$ 20

Total (actual cost)	\$ 186*
---------------------	---------

* Compare to National Partitions modular walls that start under \$40 plus options.

Tax depreciation Savings

\$100,000 Construction	National Partitions	Conventional Construction
Time	4 weeks	8 weeks
Initial cost	\$100,000	\$100,000
Depreciation		
Year one savings	\$25,000	\$2,561
7 years total depreciation	\$100,000	\$17,948

* Consult your CPA for verification on your application.



Why National Partitions?



- The nation’s largest and leading manufacturer of interior walls and building systems
- Nationwide network of distributors, to provide localized assistance and support
- Professional factory installations, satisfaction guaranteed
- Trouble-free guaranteed delivery service
- Quality modular construction that will meet or exceed building code requirements



RapidWall™ systems for every industrial, institutional, and commercial application

The ideal way to construct walls. Flexible, economical, and fast and clean to install, our RapidWall™ systems provide “building blocks” for our modular building solutions. With multiple systems and numerous wall types, and a wide array of inner core options, coatings and finishes, National Partitions has the modular wall for your application and budget.

DECOWALL™



Floor-to-ceiling front office partition system with three standard colors, optional colors available.

Available with: ThermalCore™, Type-1 Core™, 1-Hour Core™, HushCore™

CLEANWALL™



Ideal for specialty enclosures where a cleanable, durable steel surface and thermal insulation are important.

Available with: ThermalCore™

HIWALL™



Seamless one-piece steel faced panels up to 40 feet high.

Available with: ThermalCore™

LEEDWALL™



The LEEDWall™ is the industry’s full-featured price leader that offers great performance benefits.

Available with: ThermalCore™, Type-1 Core™, 1-Hour Core™, HushCore™

TOUGHWALL™



Utilizes heavy duty steel sheets laminated to the wall surface for added protection and durability.

Available with: ThermalCore™, Type-1 Core™, 1-Hour Core™, HushCore™



A variety of core options

A variety of RapidWall™ inner cores are available to choose from, depending on building codes, sound deadening, and thermal resistance requirements.

THERMALCORE™



For superior strength and thermal insulation over steel studs.
STC: 30, R-Value: 9-13.5

CRAFT HONEY COMB



Craft Honey Comb, light weight and strong. Factory Mutual Compliant Construction.
STC: 25-30

1-HOUR CORE™



Certified ASTM E-119 one-hour endurance construction for fire safety.
STC: 35-45, R-Value: 12

HUSH CORE™



Combines fire-resistance with better sound deadening performance (STC 45 or better).
STC: 45-55, R-Value: 12



Code compliant, unlike any modular wall systems

We meet all major building codes (ANSI, ICC, IBC, ICBO, UBC) with certified RapidWall™ systems for the requirements of the American Society for Testing and Materials—ASTM E84 Class A, ASTM E119 one- & two-hour fire ratings, as well as ASTM 286 and the 25 ft. high corner test (listed and certified by Omega Point Laboratories).



25 ft. high
Corner Test Preparation



Sustained Flames
1500° - 1800° F



Result: Pass 25 ft. High
Corner Test



Value-added modular construction

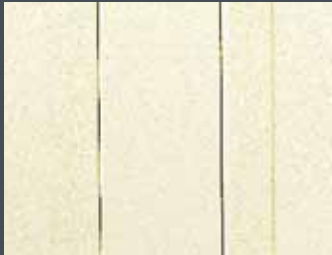
- Greater durability and superior fire protection
- Shorter construction time and fewer facility interruptions
- Cleaner construction and maintenance
- Major cost savings, including significant tax benefits



Unmatched quality features

- **TrueMatch™** - Attractive vinyl-faced components that perfectly match the wall's surface
- **DiamondCoat™** - Durable 8 mil vinyl, nearly twice as thick as economical vinyl
- **Gripper™** - Unique panel connection system that grips the panel to prevent intrusion of noise, dust and unconditioned air. (Patents #6253516, 6076322)
- **HiWall™** - Seamless panels up to 40 feet high for dividing plant areas

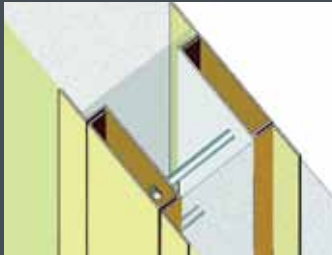
TRUMATCH™



DIAMONDCOAT™



GRIPPER™



HIWALL™



Stronger steel components

- **GalvaCoat™** - Galvanized for corrosion protection
- **DuraBoss™** - Baked-on acrylic enamel for an attractive and durable finish
- **PeelGuard™** - Removable film on steel panels for protection during installation
- **Structural Inserts™** - Bolted and anchored designs, engineered for code compliance

GALVACOAT™



DURABOSS™



PEELGUARD™



STRUCTURAL STEEL



Anchored proprietary structural insert



Bolted beam to insert assembly



Heavy duty doors — the best in the industry

- **Heavier Steel** - 16-gauge frames and 20-gauge doors for durability
- **Powder Coat** - Tough powder coat finish to last
- **TiteSeal™** - Full gasket jamb to seal out noise and dust

HEAVIER STEEL



POWDER COAT



TITeseal™



WirePak™

A modular wiring system engineered for fast installation and maintenance, WirePak™ allows the wiring of outlets and lights with snap-together simplicity. Manufactured with heavy-duty, commercial/industrial grade components (UL listed, meets National Electric Code).

WIREPAK™



Lower Prices

Efficient, single-source manufacturing, value engineering, and the economies achieved by being the nation's largest manufacturer of interior modular construction, enables National Partitions to offer better products at lower prices.

Call us for a quote at 1-800-996-7266.



**NATIONAL
PARTITIONS**

BUILD FOR CHANGE™

10300 Goldenfern Lane
Knoxville, TN 37931
800.996.7266
n-p.com