

Wire Deck

Product Guide



Product Web Page
http://huskyrackandwire.com/products_



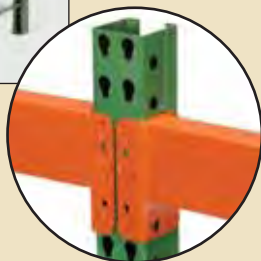
Full Product Line of Pallet Rack & Wire Deck Systems

Wireway Husky is the only RMI certified company to manufacture rack and wire deck together. Wireway Husky also provides technical and engineering support across an extensive product line that uses numerous punch styles and sizes to meet customer needs. As the originator and leader of the Guaranteed 48-Hour Quick Ship program, our customers have come to expect unparalleled service with quality product as standard.



INVINCIBLE® RACK

The Wireway Husky line of Invincible pallet rack features brands synonymous with quality in the pallet rack industry for more than 48 years. Upright frames are available in both 3" x 1-5/8" and 3" x 3" posts with heights up to 46 Ft. The teardrop pattern is an industry standard and accepts most teardrop style beams. Beams feature the patented Bowlock® safety clip. Bowlock® cannot be sprung or removed without first removing the load and requires no special tools. Standard colors are green upright frames with orange beams. Call for other color options.



INVINCIBLE® RACK

Most common in the rack industry. Two teardrop punches side by side on 2" centers. Beams adjustable every 2".

3" x 1-5/8"



3" x 1-5/8" Posts available in:
14 gauge

3" x 3"



3" x 3" Posts available in:
14 gauge
13 gauge
12 gauge
11 gauge



LYNX RACK®

Features a Double Slotted Post. 3 inch centers provide quick, easy vertical adjustment of beams. Lynx punch features two angled slots. Beams adjustable every 3". Compatible with similar designs of double slotted rack. Integral safety catch automatically locks into place when beam is properly seated. Standard colors are gray upright frames with yellow beams. Call for other color options.



LYNX RACK®

Features two angled slots on 3" centers. Compatible with similar designs of double slotted rack.

Available 3" x 1-5/8" and 3" x 3"



3" x 1-5/8" Posts available in:
14 gauge



3" x 3" Posts available in:
14 gauge
13 gauge
12 gauge
11 gauge

Subject to order quantity

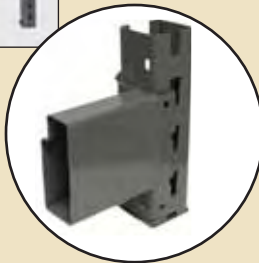


RELIABLE® RACK

The Wireway Husky line of Reliable pallet rack features brands synonymous with quality in the pallet rack industry for more than 48 years. Upright frames are available in 3" x 3" posts with heights up to 46 Ft. The keystone pattern is an industry standard and accepts most keystone style beams. Standard colors are gray upright frames with gray beams. Call for other color options.

RELIABLE® RACK

Features a single keystone hole in the center of the upright face on a 3" centerline. Beams adjustable every 3". Beams from both sides share the same hole. Compatible with similar designs of keystone rack.



3" x 3"



3" x 3" Posts available in:

14 gauge
13 gauge
12 gauge
11 gauge

Subject to order quantity



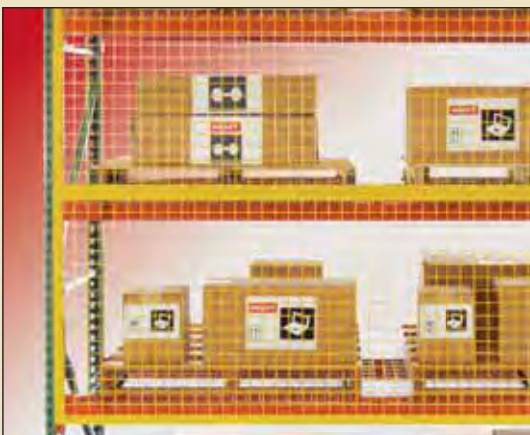
Prevent Materials from Falling into Aisles!

Wireway Husky's Aisle Shield is an all-steel welded wire, high visibility, flute-stiffened solution to rack aisle protection. Unlike netting, which acts to catch falling product and is very difficult to install, Aisle Shield prevents the product from falling in the first place.

Easy to install with engineered eyebolts, you will receive a product which meets the increasing demands of regulatory agencies for fall protection into pallet rack aisles.



Wireway Husky is the only pallet rack manufacturer to produce its own wire deck. This means you get a wire deck engineered to fit right and meet the performance demands of professional material handlers. Wireway Husky's wire deck is the solution for both new and existing pallet rack systems. Numerous designs are available for a variety of capacity and application needs covering all aspects of both manufacturing and distribution. Installs quickly with no tools and is an excellent choice for facilities with sprinkler systems. Meets all fire and safety regulations.



Prevent Materials from Falling into Aisles!

Rack Guard is the economical answer to rack safety and the increasing demands of regulatory agencies.

Our panels attach to pallet rack systems using spacer clips. 8-gauge, 2" x 2" square welded steel wire mesh welded to a steel angle frame encloses the rack while still providing inventory visibility. Yellow Finish.

Systems From Wireway Husky

From small to large, Wireway Husky is ready and experienced to provide design assistance and manufacture for all your rack system needs. From catwalks to rack supported mezzanines to full pick modules, we have the products and capabilities to successfully construct your project. Services include assistance with structural design, application efficiency, seismic compliance and permitting.

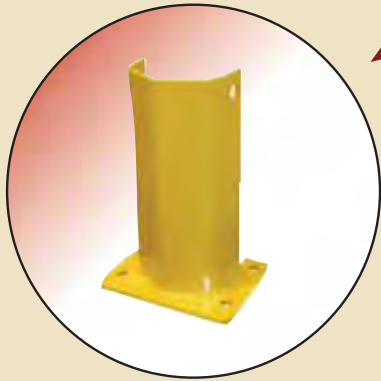


Custom
Colors
Available
on All
Products



Accessories

Floor Mount or Bolt-On



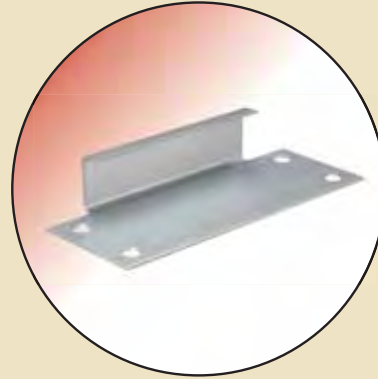
Post Protectors

Protects base of upright frames from lift trucks to minimize impact damage.



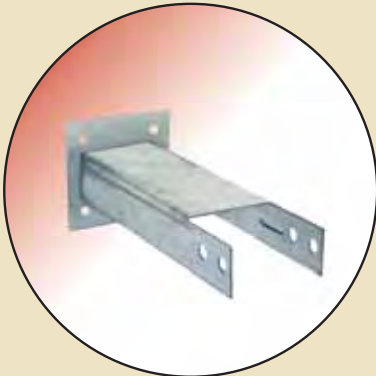
Invincible Wall Spacer

Secures upright frames to walls for added strength and to help prevent overturning.

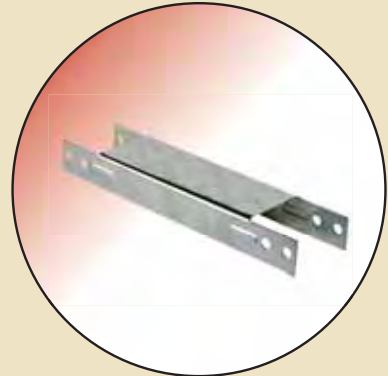


Invincible Row Spacers

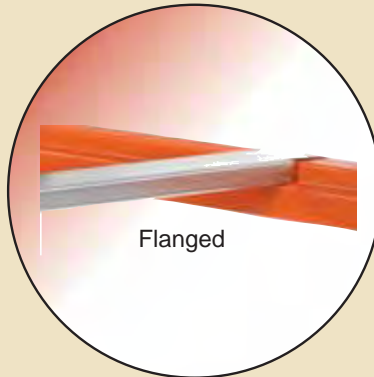
Ties rows of rack together for proper alignment and added strength.



Reliable or Lynx Rack Wall Spacer



Reliable or Lynx Rack Row Spacer



Crossbars

Spans gap between beams to help prevent pallets from falling through.



Fork Entry Bars



Drum Cradle



**"From Order to Out the Door" 48-Hours or Less,
GUARANTEED . . . or we pay the freight!**

UPRIGHT FRAMES			
IU18: 3" X 1-5/8" X 14 GA			
D X H	Capacity	Model #	Lbs.
36 x 96	See IU18 Capacity Chart to Right	IU18360096	37.59
36 x 144		IU18360144	54.97
42 x 96		IU18420096	39.27
42 x 120		IU18420120	50.44
42 x 144		IU18420144	57.28
42 x 192		IU18420192	75.30
48 x 96		IU18480096	41.00
48 x 120		IU18480120	52.87
48 x 144		IU18480144	59.67
IU24: 3" X 3" X 14 GA			
42 x 144	See IU24 Capacity Chart to Right	IU24420144	72.14
42 x 192		IU24420192	95.17
42 x 240		IU24420240	118.20
48 x 192		IU24480192	98.18
SU29: 3" X 3" X 13 GA C/W 5" X 8" FP			
42 x 144	See Chart to Right	SU29420144	92.50
42 x 192		SU29420192	119.82

BEAMS			
H x L	CAP/PR	Model #	Lbs.
3.0 x 48	7,383	IBX30048	10.65
3.5 x 96	4,044	IBX35096	21.05
3.9 x 96	5,047	IBX39096	22.39
4.3 x 96	6,111	IBX43096	23.66
4.3 x 108	5,000	IBX43108	26.37
4.3 x 120	4,062	IBX43120	29.08
4.3 x 144	3,000	IBX43144	34.50
5.5 x 108	8,873	IBN55108	36.07
5.5 x 144	5,569	IBN55144	47.44
6.0 x 144	7,820	IBH60144	59.91

GALVANIZED WIRE DECKS			
Depth x Width	Capacity	Model #	Lbs.
36" x 46" x 3 channel	3,250	3646A3	18.58
36" x 52" x 3 channel	3,250	3652A3	20.09
36" x 58" x 4 channel	3,900	3658A4	23.83
42" x 46" x 3 channel	2,610	4246A3	21.40
42" x 52" x 3 channel	2,610	4252A3	23.11
42" x 58" x 4 channel	3,150	4258A4	27.48
48" x 46" x 3 channel	2,100	4846A3	24.61
48" x 52" x 3 channel	2,100	4852A3	26.57
48" x 58" x 4 channel	2,630	4858A4	31.61

UPRIGHT FRAME CAPACITY			
Beam Spacing	IU18	IU24	SU29
36	19,380	28,800	35,500
42	18,100	27,200	33,600
48	16,700	25,300	31,100
54	15,300	23,200	28,600
60	13,800	21,100	26,000
66	12,300	19,000	23,400
72	10,900	16,900	20,800
78	9,500	14,900	18,200
84	8,300	13,100	16,100
90	7,300	11,600	14,200
96	6,500	10,300	12,700



Invincible®

The most common connection used in the rack industry today. Two 'teardrop' punches side-by-side going all the way up the upright on 2" centers making beams adjustable on the upright every 2". Standard colors are green uprights with orange beams.

WALL SPACERS		
Length	Model #	Lbs.
6"	WSIN06	0.87
8"	WSIN08	1.10
12"	WSIN12	1.55

CROSSBARS		
Depth	Model #	Lbs.
36"	A1036G	4.37
42"	A1042G	5.13
48"	A1048G	5.88

ROW SPACERS		
Length	Model #	Lbs.
6"	RSIN06	0.87
8"	RSIN08	1.10
12"	RSIN12	1.55

STANDARD POST PROTECTOR		
Height	Model #	Lbs.
12"	I5712-P	11.10

GENERAL NOTES

1. Beam capacities are for uniformly distributed loads.
2. Beam capacities are based on a deflection specification of beam length/180 or on connector shear capacity, whichever is limiting.
3. Beams over 120" in length should be tied across the middle to prevent beam spread.
4. Beams over 90" that support loose decking should be tied across the middle to prevent beam spread.
5. Please call the factory for any beam spacing on an upright greater than 96".

1. Beam capacities are for uniformly distributed product loads. 2. Beam capacities are based on a deflection specification of beam length/180 or on connector shear capacity, whichever is limiting. 3. Beams over 120" in length should be tied across the middle to prevent beam spread. 4. Beams over 90" that support loose decking should be tied across the middle to prevent beam spread.

* Exceptions to Guarantee: Delays due to acts of God, strikes, trucking service interruptions or international shipments. All orders are subject to credit department approvals. 48-Hour Quick Ship is based on order being received before 2:00 P.M. Eastern Standard Time. Call for pricing! Acknowledged QUICK SHIP orders not subject to price changes.



Wire Deck

Product Guide



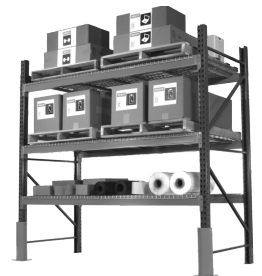
Husky Rack and Wire

6146 Denver Industrial Park Circle
Denver NC 28037

info@huskyrackandwire.com
phone: 800-438-5629
phone: 704-483-1911

Pallet Rack ● Wire Partitions ● Guarding

Wireway Husky Corp., one of the largest producers of material handling products in the country, is based in Denver, N.C. Its Husky ® products include pallet racks, welded wire-deck, cable reel racks and pallet rack guarding systems. Additionally a whole range of security wire partition products are produced and marketed under the 'Wireway ®' brand name.



When you absolutely have to have it
shipped in 48 hours or better.
On ONE shipment - from One location
Come Home to the 'Original', 49 Years
... and still the only
Guaranteed Quick Ship Program coast to
coast.



View Product